



# High performance 12.1" LCD digital fish finder delivers super clear view of fish targets!

The FCV-1150 is a new color digital sounder designed for a variety of professional fishing operations. It features a high-brightness, bonded 12.1" LCD display with AR-coated glass filter and anti-polarized sunglass filter, providing superior viewing even in direct sunlight. You can choose to display the echo presentation in 8, 16, or 64 colors, with color assignment dependent on the strength of the returned echo. The FURUNO Free Synthesizer (FFS) Transceiver allows for a wide selection of operating

frequencies. You may choose any two frequencies between 28 and 200 kHz to best suit your fishing operation. Output power is selectable from 1, 2 or 3kW. A wide variety of display modes and functions are available that provide skippers with simple and intuitive information. The FCV-1150 can also be connected to a FURUNO satellite compass to compensate for heaving, thus providing unwavering, stable detection even in rough seas.



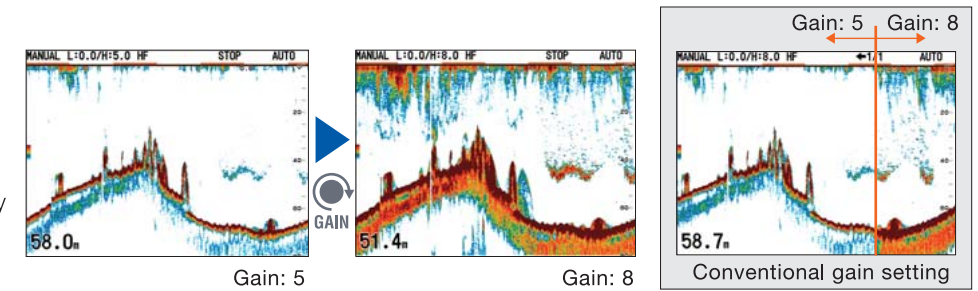
## COLOR LCD VIDEO SOUNDER FCV-1150

- ▶ High-brightness (1,000 CD) 12.1" 'Fog-Free' LCD with AR coated glass filter and anti-polarized sunglass filter
- ▶ Post-processing gain control applies changes to gain setting to all existing returns on the display
- ▶ White Edge bottom discrimination
- ▶ Available Heaving Compensation provides stable echo presentation even in rough seas
- ▶ FURUNO Digital Filter delivers crystal clear target presentation
- ▶ Furuno Free Synthesizer (FFS) allows for adjustable operating frequency



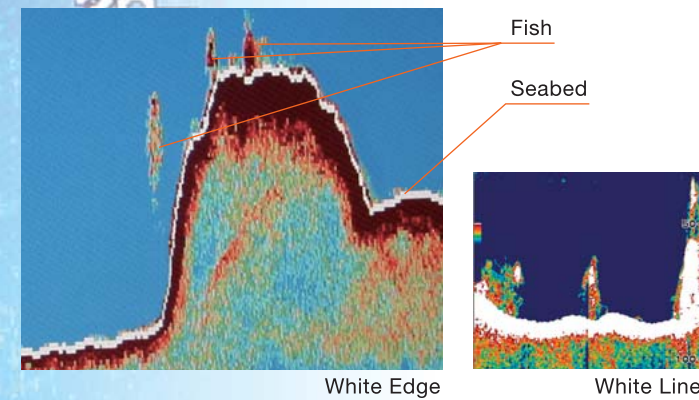
## Quick Gain Setting

With conventional gain controls, changes are made for new echoes only when a change in the setting is applied. With the FCV-1150's Quick Gain control, changes in the Gain setting are applied to new echoes as well as all of the echoes already on the screen. Because the changes are applied to both new and existing returns, you will be able to quickly and easily find the right Gain setting for your conditions.



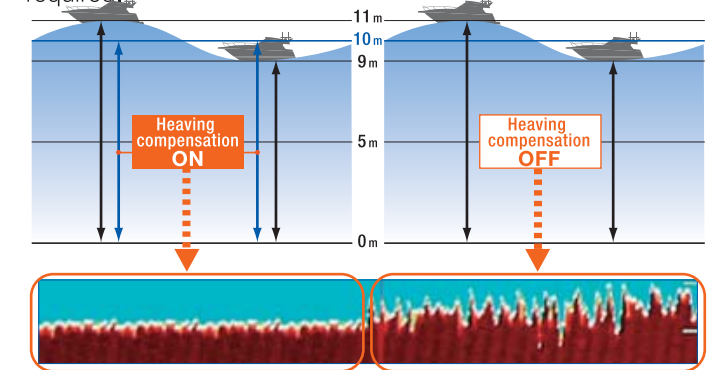
## White Edge

The top of the seabed is displayed in white to easily discern seabed structure from bottom fish returns. While conventional bottom discrimination function (White Line) is applied to the strongest echoes, the White Edge function enhances the discrimination of bottom fish and seabed.



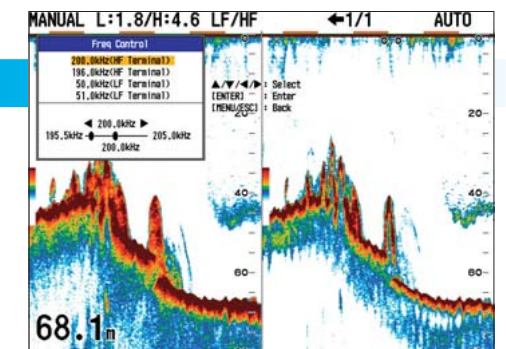
## Heaving Compensation

Even in rough sea conditions, the FCV-1150 compensates for heaving, presenting a display without undulations caused by the sea conditions. FURUNO SC-30, SC-50 or SC-110 required.



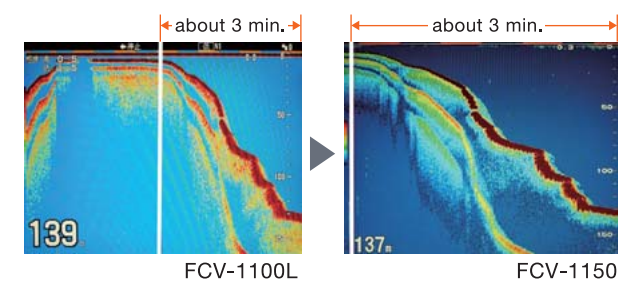
## Operating Frequency Adjustment

If a FURUNO transducer is used, the operating frequency is automatically set in the menu. The user can shift the operating frequency at any time from the menu. With the FURUNO 82B-35R transducer, the operator can select any operating frequency from 65 to 110kHz. This feature is particularly useful for vessels targeting many different species, or when the fish finders of other ships in the area cause interference.



## Faster Transmission Rate For Detailed Detection

The rate of transmission is increased by more than 30% compared to current conventional fish finders. As a result, more detailed information about underwater conditions can be gained through the same sounding interval. This means that the transmission speed is raised in shallow waters, and lowered in deep waters. The high-speed transmission provides for detailed detection of seabed targets.



## Function Key

An often-used function such as TVG (Time Varied Gain) can be programmed to register with the press of the Function key. This will give you access to any menu item without opening the menu.



- Functions which can be registered
- Pic. Advance / Interference / Color Erase / Clutter / White Line / White Marker / TVG / STC / Bottom Zone / A-Scope / Split Range / Auto Shift / Freq Choice / Freq Control